



People Saving Special Places



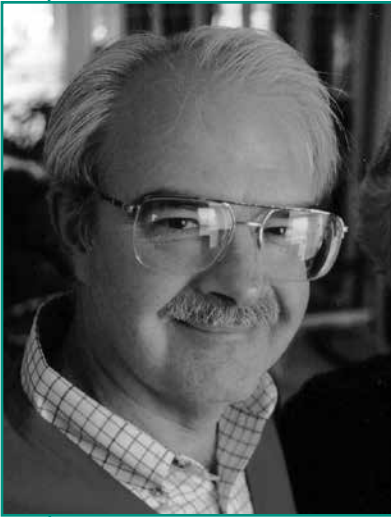
Parks & Trails Council of Minnesota



Annual Report 2007

Dear Friends

Since 1954, the Parks & Trails Council of Minnesota has worked tirelessly with our members and partners to build an outdoor legacy. As we closed out our 53rd year in 2007, we took great pride in having established our place as Minnesota's preeminent voice for parks and trails. We are especially satisfied with having reached a historic new milestone this year – purchasing land valued at more than \$3 million for Minnesota's beloved public park and trail systems. Of course, all of our success has been made possible thanks to the generosity and dedication of our members and donors, who support us financially, stretch our resources and increase our credibility and clout by volunteering and strengthening our voice at the State Capitol. We are sincerely grateful to all of you.



F. M. (Tim) Farrell

The pages of this annual report, like ones past, demonstrate how the Parks & Trails Council has stayed true to our mission of protecting, enhancing and expanding Minnesota's most special outdoor places. We are pleased to report that several years of persistence paid off late in 2007 when we purchased the core land for Minnesota's newest state recreation area at Greenleaf Lake halfway between Hutchinson and Litchfield. We are also happy to report that our partnership with the Voyageurs National Park Association resulted in our organization's first acquisition in a national park.

As you can surely attest, the Parks & Trails Council continues to be a leader in conservation and outdoor legacy issues. Our work at the State Capitol resulted in modest but long overdue gains for state trail operations and maintenance, funding for state park and trail acquisition and the authorization of the Brown's Creek State Trail in Stillwater. Unfortunately, Gov. Tim Pawlenty's veto pen struck down additional capital support and the 2007 Legislature again failed to pass a dedicated funding bill in its closing hours.

Our commitment to educating and energizing our action team and general membership once again took many forms and paid substantial dividends in 2007. Our annual Day on the Hill and Bike Minnesota with Parks & Trails events and our board tour of central Minnesota all made us a more visible, effective and efficient organization.

Parks and trails are a critical part of Minnesota's high quality of life. We appreciate your continued support and pledge to continue our work to save special places for present and future generations by making necessary and smart investments in advocacy, land acquisition and in growing our membership base.

Sincerely,



F.M. (Tim) Farrell, President



Dorian Grilley, Executive Director



Dorian Grilley

Government and Community Relations

THE PARKS & TRAILS COUNCIL OF MINNESOTA'S
ability to effectively
communicate the needs of the state's park and trail system and its
users
to legislators and government officials has made it the preeminent
voice for parks and trails throughout Minnesota and at the Capi-
tol. Always

Fresh energy and opportunity in 2007, but results are mixed

By Judith Erickson, government and community relations director

It is usual for the annual report to talk about all the good things we have accomplished as an organization, but as I review the 2007 legislative session what I remember most is a lot of hard work and a lot of legislative interest but little to show for it. The Parks & Trails Council sets our legislative priorities and works with our members through the legislative process, but we can't always guarantee that every year we will meet with success. There are variables in the political process that take things completely out of our hands and the hands of those who seek to help us. Does it mean we failed? No. It means we pick ourselves up and get ready for the next round. We build on the new relationships developed and continue to press for smart investments in our state park and trail legacy.

The result of the 2006 general election resulted in an influx of new legislators – nearly one-fourth of the entire Legislature was new – and there was new leadership at all levels in both the House and the Senate. The Parks & Trails Council's challenges were to bring our message into focus for the new leadership and to advocate strongly for increased operations and maintenance investments in our state park and trail systems.

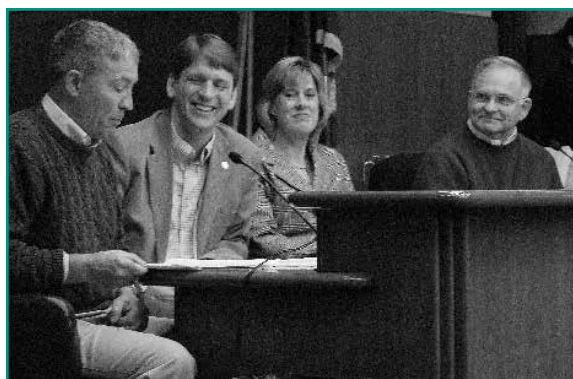
Operations and maintenance funding falls short

Our priority for the 2007 legislative session was to secure \$9 million a year in new funding for Minnesota's state parks and trails legacy. The Parks & Trails Council made our case the old-fashioned way – asking for investments from the state's general fund. Our proposal received a very positive response from legislators, and the bill authors, Rep. Frank Moe (DFL-Bemidji) and Sen. Gary Kubly (DFL-Granite Falls), did an excellent job of supporting our effort. However, in the end no new funding was made available, and there was little they could do. The end result was an increase of \$750,000 per year in operations and maintenance funding for Minnesota's state trails. The Legislature's response to our requests points very clearly to why dedicated funding specifically for conservation – including parks and trails – is so important.

Bonding bill and dedicated funding run out of time

When the clock chimed midnight on May 21, the 2007 Legislature adjourned without taking final action on the 2007 bonding bill or a conference committee report on dedicated funding. While the Parks & Trails Council had not planned to work on the bonding bill, a couple of projects emerged during the session for which we lent a hand – \$125,000 for a multi-purpose trail in the Cuyuna State Recreation Area, which matched \$750,000 in federal funding, and initial funding for acquisition of the Brown's Creek Trail a.k.a the Zephyr dinner train.

Parks & Trails also worked very hard on what is now called the Legacy Bill – a constitutional dedication of funding for clean water, habitat, parks and trails and culture. In 2007, a conference committee reached an agreement, but the conference committee report was not adopted before the session adjourned.



As the preeminent voice for Minnesota's parks and trails, the Parks & Trails Council is often called upon to testify before the Legislature. Such was the case on March 8 when we were asked to testify before the House Environment & Natural Resources Finance Division. From left to right: Lutsen Resort owner Scott Harrison, Assistant House Majority Leader Rep. Frank Moe (DFL-Bemidji), Parks & Trails Government Relations Director Judy Erickson and Minnesota Trails magazine Editor and Publisher Dave Simpkins.

Land Acquisition

THE PARKS & TRAILS COUNCIL OF MINNESOTA

works to acquire, protect and enhance land that is critical to our state's park and recreational trail systems so that Minnesota's aesthetic, ecological and cultural character can be preserved for the public's enjoyment now and in the future. Since 1954, we have been instrumental in adding more than 9,000 acres valued at more than \$26 million to key areas within the state's vast

Land acquisitions in 2007

Gateway State Trail

The Parks & Trails Council purchased two parcels totaling 6 acres to extend the Gateway State Trail toward Marine, William O'Brien State Park and Scandia. The Parks & Trails Council is now in the process of transferring these important segments to the Minnesota Department of Natural Resources (DNR) for incorporation into the public trail system. The Parks & Trails Council is also working to acquire additional parcels to complete these trail links.

Grand Portage State Park

In December, the Parks & Trails Council acquired a 6.5-acre parcel fronting North Shore Hwy. 61 that will soon serve as the site of a new joint Grand Portage State Park/Minnesota Department of Transportation (Mn/DOT) information center and wayside. Mn/DOT plans to acquire the land from the Parks & Trails Council at cost in 2008. Construction on the visitor center should start soon afterward.

Greenleaf Lake State Recreation Area

The state's newest recreation area at Greenleaf Lake halfway between Litchfield and Hutchinson is one step closer to reality thanks to the

Parks & Trails Council, which purchased core land for the outdoor adventure haven on Dec. 6. The 386-acre tract, which contains nearly all of the shoreline along the two lakes within the authorized Greenleaf Lake State Recreation Area boundaries, is significant because it is the first parcel purchased for the area, and because it makes up nearly one-third of the unit's total 1,200 acres.

Voyageurs National Park

In August, the Parks & Trails Council purchased a critical 3.4-acre Kabetogama Peninsula shoreline property in Voyageurs National Park from a private landowner. The parcel was No. 1 on the park's land acquisition priority list because of its high visibility to visitors entering the park from Rainy Lake. The acquisition leaves only 54 private properties totaling 913 acres within park boundaries. More importantly, the acquisition reestablishes a 42-

Greenleaf Lake is one of two lakes located within the Greenleaf Lake State Recreation Area boundaries. The lake is home to mostly pan fish and bass and will provide excellent fishing opportunities. Photo courtesy of Mark Lissick, WildLight Nature Photography.

year-old connection between the Parks & Trails Council and the Voyageurs National Park Association. The two organizations worked together on this project and have pledged to work together to protect the park's remaining inholdings from development.

William O'Brien State Park

When William O'Brien State Park was expanded westward and southward in the 1970s, an 80-acre section in the middle owned by people who were opposed to the expansion was omitted from the statutory park boundary. In May, 35 years after that significant expansion, the Parks & Trails Council was able to acquire 24 acres of that area. The parcel is visible by looking across the park's central wetland from the group camp site and from several park trails. The property included a 1930s vintage cottage and a modest ranch house, but it was ripe for development with larger homes.

Whitewater State Park

In December, the Parks & Trails Council acquired a key 17-acre parcel containing a section of the Whitewater River immediately north of the park visitor center. The property will serve as an important buffer to additional development in the valley and will offer the DNR the chance to restore and manage another 800 feet of the river.



From the Land Acquisition Committee Chair

In 2007, the Parks & Trails Council acquired lands valued at more than \$3 million. The late Sam Morgan, the namesake for our land acquisition fund, would have been proud of this unprecedented accomplishment. We also had a big year transferring land to public ownership moving \$2.86 million in land assets to public agencies.

None of this would have been possible without the help of volunteer project managers and land acquisition committee members whose valuable contributions of time and talent are essential to the success of our land acquisition program.

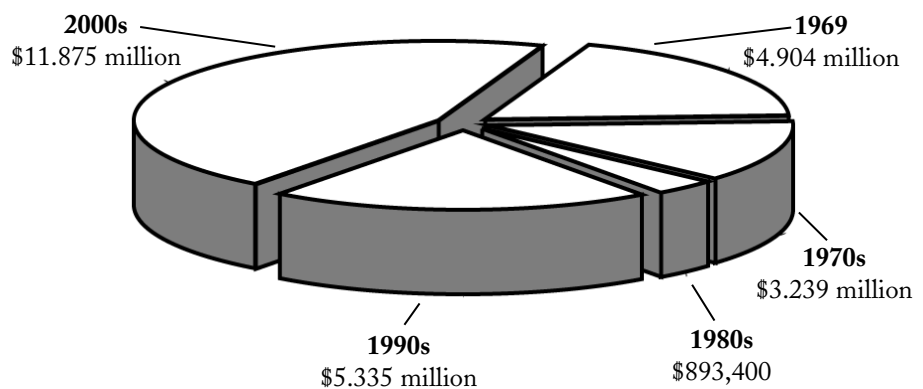
We also especially thank the attorneys who so generously donated their pro-bono legal support and expertise and that of their firms. Many thanks are due to Jeff Benson of Fredrikson & Byron; Andrew Jacobson of Maslon Edelman Borman & Brand; Deborah Muehlbauer of Jeffrey C. Paulson & Associates; Tim Eschweiler of Oppenheimer, Wolff & Donnelly; Steve Hettig of Kraft, Walser, Hettig and Honsey; and Bill Buell and Kathleen Connelly.

At the end of 2007, the Parks & Trails Council was actively working on several very large land acquisition efforts including the Brown's Creek State Trail, shoreline in Tettegouche and Crow Wing state parks and a trail between Hastings and Red Wing. Completion of these projects alone would greatly exceed our existing financial capacity. We will need continued financial support from our generous members and from the Legislature to be able to save these special places and others.

Land Holdings 2007

Park/Trail	Cost/Value	Acres	Notes
Crosby-Manitou State Park	\$302,710	680	Land exchange with Lake County
Crow Wing State Park	\$344,000	28	Completes Paul Bunyan Trail from Brainerd to Crow Wing State Park
Cuyuna Lakes State Trail	\$ 19,300	9.25	Trail easements (1.8 miles)
Gateway State Trail	\$ 11,000	1.4	Donated for trail extension
Gateway State Trail	\$ 92,000	4.5	Easement for trail extension
Gateway State Trail	\$ 12,500	4.6	Easement for trail extension
Grand Portage State Park	\$210,000	6.5	Site for new park visitor center
Greenleaf Lake State Rec. Area	\$2,123,300	258	First purchase for state's newest recreation area
Greenleaf Lake State Rec. Area	\$ 50,000	128	Purchase option
Grey Cloud Island	\$ 5,400	10	Long-term holding
Charles Lindbergh State Park	\$265,500	96	Sold to the DNR in 2007
Superior Hiking Trail	\$ 28,000	40	Long-term holding of Devil's Track
Tettegouche State Park	\$ 12,900	40	Sold to the DNR in 2007
Tettegouche State Park	\$ 5,000	18.5	Right of first refusal
Tettegouche State Park	\$600,000	7.25	Sold to the DNR in 2007
Voyageurs National Park	\$303,600	5.7	One of 55 remaining inholdings
Whitewater State Park	\$340,000	17	Key parcel at park entrance
Whitewater State Park	\$970,000	215	Sold to the DNR in 2007
William O'Brien State Park	\$785,400	24	Sold to the DNR in 2007
	\$2,161,200		Total at start of 2007
	\$3,916,800		Total added in 2007
	\$2,855,000		Total sold to the DNR in 2007
	\$3,223,000	1,594	Total holdings at end of 2007

Value of land acquired 1969-2007
(Total of \$26,247,200 adjusted for inflation to 2006 CPI)



Membership and Development

DONOR AND MEMBER GENEROSITY over 54 years has enabled the Parks & Trails Council to acquire and protect more than 9,000 acres in Minnesota's superior system of public parkland and trails. Thanks to this steadfast support, Minnesotans today and tomorrow will enjoy pristine rivers and creeks, quiet stands of oaks, shorelines teeming with wildlife — as well as naturalist-led learning opportunities, sturdy camper cabins and clean campsites



People making parks and trails

The support of our newest friends and renewing members alike is a sustaining force in the well-being of Minnesota's parkland and trails. The dedication of 3,300 members statewide inspires the Parks & Trails Council to advocate for protected natural spaces. Members offer gifts of money, time, testimony and action. Whether volunteering at educational workshops and events in every corner of the state or rallying their neighbors and fellow residents to contact their legislators, our members are out making parks and trails happen! Their willingness to give freely for the well-being of all Minnesotans is truly astonishing, and we are grateful.

Leading others to give

The Magney Circle, whose members have made substantial unrestricted gifts to the general operating funds of our organization, continues to offer a great base of support! In addition to providing funds that we can use where most urgently needed, donations from Magney Circle members also inspire others to give. We are thrilled to list 60 members or households as Magney contributors in 2007. To them, a special thank you.



THANK YOU!

In 2007, Magney Circle membership reached 60

Planned gifts offer a stronger future

In the past year, a growing number of donors has acted to ensure the next generation of advocates has the resources to grow parks and trails in Minnesota. Perhaps they were inspired when member Erik "The Bike Man" Saltvold penned a letter about how he planned to care for Minnesota's trails, open space and parkland with a bequest to the Parks & Trails Council. He invited other members to consider how they, too, might leave a legacy of value.

Legacy donors are looking ahead with planned gifts, such as bequests and charitable annuities, to the Parks & Trails Council. Their gifts will continue to benefit special places long into the future. We send a special thanks to all of you who have included the Parks & Trails Council in your estate plans!

To leave your own legacy gift, contact Erin at (651) 726-2457.

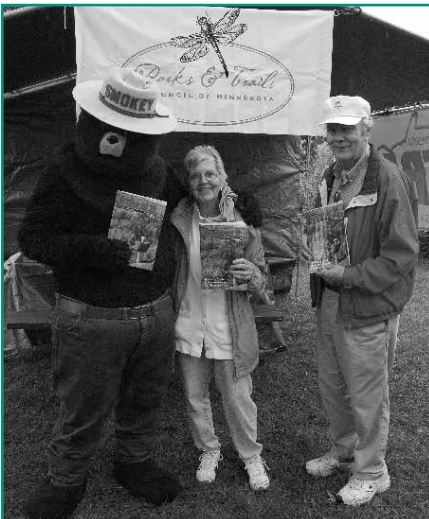
Magney Circle members participated in a hike at Fort Snelling State Park on May 5, including from left to right: Fred Winston, Charlie Silverson, Noreen Farrell, Parks & Trails President Tim Farrell and Past President Eleanor Winston.

Community Partners

Preserving the legacy of Minnesota's parks and trails!



In 2007, the Parks & Trails Council continued to maintain a presence at a number of high-profile events, including the Third Annual Parks & Trails Day at the State Fair (below). Efforts to expand partnerships with organizations committed to getting children into our parks and on our trails also grew in 2007.



THE PARKS & TRAILS COUNCIL has long valued the creative ideas and energy that individual members and local groups bring to park and trail efforts. A statewide organization, the Parks & Trails Council serves as a hub for all of this energy. We are the coordinator that links individual efforts together and the conduit that brings knowledge gained on a project in one region to a developing idea in another one. The Parks & Trails Council attends local planning meetings in communities throughout the state and hosts training workshops and a Labor Day bike adventure. In 2007, we continued to strengthen this vital network

Biking Minnesota with Parks & Trails

For the third consecutive year, Parks & Trails Council Board Member and Minnesota Court of Appeals Judge David Minge led 60 adventure-seeking bicyclists on the *Bike Minnesota with Parks & Trails* ride over the Labor Day weekend.

This year the three-day, 135-mile trek showcased southwestern Minnesota and its many natural and cultural resources drawing attention to the many benefits of the region's parks and trails. Local experts narrated the cyclists' journey with real-life stories about

the communities and landmarks they visited along the way.

Tour stops included the Danebod Folk School in Tyler, the Pipestone National Monument, the Casey Jones State Trail, historic Jasper, Split Rock Creek and Blue Mounds state parks, a Luverne-based ethanol plant, the Brandenburg Gallery and Palace Theater in downtown Luverne, the End-o-Line Railroad Park & Museum and the Laura Ingalls Wilder museum.



Bike Minnesota with Parks & Trails event participants learned about the history, the landscapes and the communities of southwestern Minnesota during a three-day Labor Day weekend adventure. The group is shown here on a beach at Split Rock Creek State Park in Jasper, Minnesota.

Statement of Financial Position

General Operating Fund

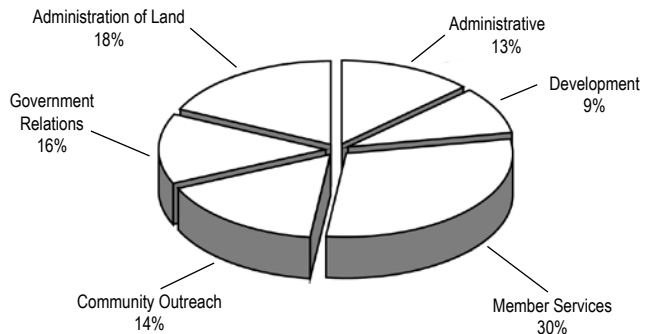
Income 2007

Total Income = \$595,960



Expenses 2007

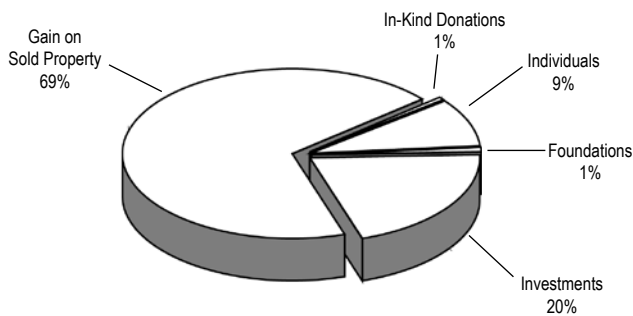
Total Expenses = \$593,290



Samuel H. Morgan Land Acquisition Fund

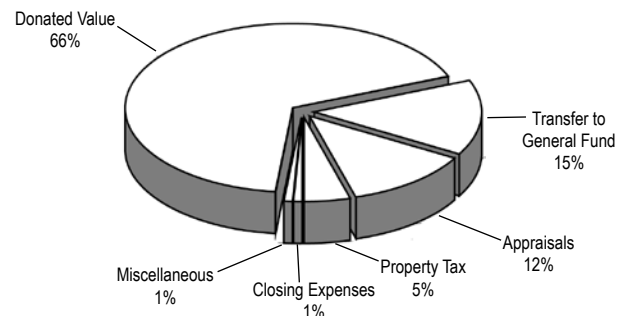
Income 2007

Total Income = \$738,990



Expenses 2007

Total Expenses = \$445,660



Fund Balances

	2007	2006	% Change
General Fund	\$323,281	\$304,201	6%
Samuel H. Morgan Land Acquisition Fund	\$5,074,441	\$4,806,351	6%
Reuel Harmon Endowment Fund	\$1,906,976	\$1,877,387	2%
TOTAL	\$7,304,698	\$6,987,939	5%

Functional Expenses in 2007 (combined land and operating funds)

Program Expenses	\$543,320	80%
Administrative Expenses	\$77,990	12%
Development Expenses	\$53,860	8%
TOTAL	\$675,170	100%

To obtain a more complete 2007 Financial Report, please contact the Parks & Trails Council office at (651) 726-2457 or (800) 944-0707 (outstate) or by e-mail at info@parksandtrails.org. **Note** – This is not an audited report.

With Special Thanks

THE PARKS & TRAILS COUNCIL OF MINNESOTA is supported solely by private donations and is grateful to all the individuals, community organizations, corporations and foundations that provided financial support in 2007. We would like to thank the following donors who have made gifts of \$100 or more in 2007. If you believe your name should be on this list, please contact the

Magney Circle

(Recognizing individuals who made an outright gift of \$500 or more to general operating funds in 2007)

Anonymous (2)
Bruce and Martha Atwater
Bruce Blackburn
Lockwood and Darlene Carlson
David Chizek
Kathleen A. Connelly and Carolyn J. Sampson
Mike and Julia Costello
Mrs. Thomas M. Crosby
Bruce Dayton
Mary Lee Dayton
David Dixen
William and Mary Dolan
Thomas Dwight
Robert O. Erickson
Tim and Noreen Farrell
Ms. Connie J. Foote
Brand and Vycki Frenz
Charles and Iris Fried
Dorian and Margie Grilley
Rodney and Diana Hanson
Donald L. Janes
Bob Nesheim and Marlys Johnson
Grace and Richard Keir
Martin and Esther Kellogg
John Kisch
Harry Lienke
Edward M. Lincoln
Irja E. Lindgren
Jean Magney
James and Sydney Masee Family
Walt McCarthy and Clara Ueland
Tim and Mary Miley
Charles Mitchell
Lois E. Mizuno
Jonathan and Martha Morgan
Bill Morrissey
Ed and Nan Upin Murphy
Richard and Joan Newmark
Mark and Jackie Nolan
Jim Nystrom
Robert J. Parke
Kem Pomeroy
Michael and Lyne Prichard
Judith Reisman and Jane Levin
Robert P. Rusch
Peter and Linda Seed
Dave and Linda Simpkins
Henry N. Somsen
Gavin Stevens
Tom and Christine Stoa
Mark and Joan Strobel
Rupert and Jeanne Strobel

Michael V. Tegeder
Thomas E. Warth
Fred and Eleanor Winston
Tom and Diane Witzig
Suzanne Woodrich and Dave Knoblauch
Phil and Anne Zink

Individual, Corporation and Foundation Donors

(Includes gifts to both land and general operating funds)

\$5,000 and more

Anonymous (2)
Gordon and Margaret Bailey Foundation
Patrick & Aimee Butler Family Foundation
Erik's Bike Shop
Great River Energy
Greystone Foundation
Irja E. Lindgren
Marbrook Foundation
The McKnight Foundation
Casey A.T. O'Neil Foundation
Robert J. Parke
Michael and Lyne Prichard Fund of the Fidelity Charitable Gift Fund
Quality Bicycle Products
Donald & Marie Roberts Family Foundation
Peter and Linda Seed
Henry N. Somsen
Rupert and Jeanne Strobel
WM Foundation
Wood-Rill Foundation

\$1,000-\$4,999

Elmer L. & Eleanor J. Andersen Foundation
Chizek Family Foundation
Kathleen A. Connelly and Carolyn J. Sampson
Mike and Julia Costello
Mary Lee Dayton
The Dolan Family Fund of The Minneapolis Foundation
Thomas Dwight
The F.M. Farrell Family Fund
The Connie Foote Family Fund of The Saint Paul Foundation
Brand and Vycki Frenz
Rodney and Diana Hanson
Donald L. Janes
Bob Nesheim and Marlys Johnson
Grace and Richard Keir

Martin and Esther Kellogg
John Kisch
Jean Magney
The Mennonite Foundation
David Minke
The Samuel Morgan Fund of The Saint Paul Foundation
Bill Morrissey
Ed and Nan Upin Murphy
Kem Pomeroy
Prospect Creek Foundation of The Minneapolis Foundation
Schwab Charitable Fund
Mark and Joan Strobel
Trendah Fund of The Saint Paul Foundation
Fred and Eleanor Winston
Phil and Anne Zink

\$500-\$999

Anonymous
Bruce Blackburn
Paul H. Brown
Peter K. Butler
Lockwood and Darlene Carlson
David and Kitty Crosby
Don and Peg Davison
Bruce and Ruth Dayton
James H. and Mary Eddy
Robert O. Erickson
Charles and Iris Fried
Peter and Mary Gove
Dorian and Margie Grilley
The Halleck Fund of The Saint Paul Foundation
Louis and Mary Hauser
Marcia E. Hillestad
Jane Levin and Judith Reisman Charitable Fund of the Raymond James Charitable Endowment Fund
Curtis G. Johnson
Kerry and Shirley Koestler
Dr. and Mrs. David Lee
Harry Lienke
Edward Mosby Lincoln Foundation
The Longview Foundation
James and Sydney Masee Family
Bill Meller
Tim and Mary Miley
Karen and David Minge
Charles Mitchell
Lois E. Mizuno
Jonathan and Martha Morgan
Mark and Jackie Nolan
Jim Nystrom
Robert P. Rusch
M. Denise and Patrick Shaughnessey

Charles Silversen and Elaine Elnes
Dave and Linda Simpkins
Gavin Stevens
Tom and Christine Stoa
John and Teresa Swoyer
Michael V. Tegeder
Thomas E. Warth
Tom and Diane Witzig
Suzanne Woodrich and Dave Knoblauch
Steven Young

\$100-\$499

3M Foundation
John Abbott
Eileen Adams
John Adolphson
Alfred and Dorothee Aepli
Bob and Linda Albert
Howard R. Alton, Jr.
Joe and Cathy Amato
American Friends Service Committee
Ameriprise Financial Gift Matching Program
Paul C. Amidon
Gretchen L. Amis
Paul Ammerman
Don F. Anderson
Anoka Area Gardeners
Michelle I. Ansorge
Cheryl Appledorn and Tom Schnettler
Scott Armitage
Tom Ameson
John and Eleanor Asmuth
Charles and Mary Babcock
Peter Bachman
Gordon and Josephine Bailey
Carol E. Ball
Shari Ballard
Matt Bass
Jo Batty-George
Jonathan and Christine Bayer
Nola Benoit
Craig Berdie
Nathan D. Bergeland
Eric Bergerson and Laura Thorpe
John and Elaine Bergquist
Larry and Judy Biederman
Charles J. Billington
Margaret L. Birse
Fran Blacklock
Bill and Beth Blank
Ms. Thelma Boeder
Fred Bogott
Christina Bonestroo
Patricia Braski and Deb Ganzhorn
Richard Brennan

\$100-\$499 (continued)

Peter Breyfogle
John and Mary Brink
Charlotte Brooker and Gene Mammenga
Conley and Marney Brooks
David J. Brown
Linda Bruemmer
Mr. and Mrs. William R. Buell
Ronald Burley
Joseph R. Cade
Rod Cameron
Dan Carberry
George L. Carlson
William Carlson
Frank and Kathie Cerra
Laurie A. Chasteen and Gary Douglas
Brad Christensen
Augustus and Sharon Clapp
Close Landscape Architecture
Donn Coddington
Barbara Coffin and Daniel Engstrom
Judy Collopy
Mary Sue Comfort
Jack and Roberta Conrad
Andrew Cook
Ann and Dodd Cosgrove
John and Sage Cowles
Stewart and Lesley Crosby
Thomas and Ellie Crosby
Diane Dahlberg
Mary Danforth
Marianne D'Angelo
Michael Delong
Ward Denaway
Bernice Dickson
Charlotte Disch
Robyn Dochterman and Deidre Pope
Ms. Olivia Dodge
Robert and Bette Dunn
Senator Dave Durenberger
Cornelia and Roger Eberhart
Alison Edgerton
Robert and Maryann Eliason
Don and Kathy Ellerton
Evan Ellison
Peg Endres and John Topic
Bill and Polly Erickson
Rondi Erickson
Vern and Carole Erickson
Ronald Erpelding
Timothy J. Eschweiler
Tim and Maria Faacs
Tim and Noreen Farrell
Kristina Felbeck
Brett Feldman
Robert and Yvonne Fiedler
Margy Filson
Linda Fleming
Ken Flies
Richard and Carol Flint
Fort Snelling State Park Association
H. Dutton and Caroline Foster
Mr. Russell W. Fridley
Friends of Wild River State Park
John and Martha Gabbert
Elaine Garley
Gateway Cycle
Gateway Trail Association
Dean Gayther
Kathie Geiger
Burle and Louetta Gengenbach
R. James Gesell
Joan and Don Gish
James F. Glockner
Gail and Tom Good
Karen Seal Grafe
Don Grant
Bryan and Carol Green
Greene Espel
Robert L. Grilley
Ken Guenther
Bob and Beth Gunderson
James Guttman
Alan and Laura Haehner
Robert and Diane Hagstrom
John Hall and Julie Gugin
Joe and Barb Halligan
Albert and Janice Hammond
Walt Handschin
Nancy M. Hanson
Rudi Hargesheimer and Judy Stern
Cynthia Harles
David and Margaret Hayden
HealthPartners Foundation
Dennis and Nancy Hebrink
Victoria Helmuth
Dean and Monica Heltemes
Jim and Maureen Henderson
Bruce Hendrickson and Laura Wolf
Bruce Henke
John and Diane Herman
Zachery Herringer and Lisa Gilliland
Steven and Chris Hettig
Ruth Hiland
Ellen and William Hoeg
Paul and Mary Hoff
Susan and George Hoff
Amy Hoffman
Bill and Linda Holley
Randall Holmes
Richard F. Holy
Theresa Horan
Keith House
Jim Howitt and Ann Lewandowski
Richard Hruby, DO
Michael R. Huber
Marc Hugunin and Alice Pepin
Hubert H. Humphrey, III
IBM International Foundation
Cynthia Ihlenfeld
Scott Iwen and Karen Poel
Dorothy and Tom Jamieson
Marion Janikowski
Barbara Jenkins
David and Judy Jerde
Ann K. Johnson
Marion L. Johnson
Orv and Kathleen Johnson
Susan and David Johnson
Walter H. Johnson
Raymond Jorgensen
James and Shirley Kalb
Lee and Judy Kaster
Ron Kaufman
Cherilyn Kellesvig Family
Jeanine Kelley and Michael Love
Lynette W. Kepp
Lloyd G. Kepple
John and Lynda Kern
Tom Kindler
Craig A. Kloster
Paul Kloth
Robert Kolasa and Lois Lenarz
Jack and Sue Knauer
Delton and Joan Krueger
Brian Krysinski
Larry and Carolyn Kuechle
Michael Kunin
John Kvasnicka
Gary Laidig and Gail Romanawski
Fred LaPlant
Brian and Pam Larson
Mark Larson and Mary Kennedy
Gregory Lauer
John and Pat Leinen, Jr.
Helen Lichliter
Gretchen and David Lindgren
John and Mary Lindstrom
John Litch
Jon E. Ljungkull
Judy Loehle-Conger
Carol A. Loomis
James Luby and Emily Hoover
Eunice E. Luedtke
Robert Luken
Rolf and Lisa Lund
Janis Lysen
Kathryn Anne Mack
Robert and Julie Manuel
Lee Markell
Phil and Stephanie Martineau
Heidi Marx
Susan L. Mathis
Phyllis J. Matthews
Mike and Patricia Mattson
Susan Mattson
Kay E. May
Michael McCarthy
Dick and Joyce H. McFarland Family
Fund of The Minneapolis Foundation
Dan and Lucy McInerny
E. Anne McKinsey
Stacy A. McMahon
H.G. McNeely, Jr.
Steve McVay
Todd Meltzer and Sue Skonnord
Mike Menzel and Kathy Iverson
Grant Merritt
Mesabi Trail
Adeline and Leonard Meskan
Timothy Metcalf
Annette L. Meyer
Bruce and Kay Miles
Edward Miller
Robert and Lucy Mitchell
Carol J. Mizuno
Donna and Henry Morgan
William Morris
James Mullin
John and Marlene Mulrooney
Katherine and Kingsley Murphy, Jr.
Dr. Robert A. Murray, Jr.
Greg and Cheryl Myhr
Kevin and Carol Neff
Bonnie Nelson
Courtland and Mitzi Nelson
Diane M. Nelson
Doug Nelson
Stanley and Barbara Nelson
Sandra and Mark Niblick
Katherine M. Nielsen
David Niemi
Dick and Joan Niemiec
Terence and Carol Niewolny
Lisa Nilles
Mark Niznik
James R. Nobles
Pat Nunnally
Cathy O'Dell
Elinor K. Ogden
Thomas O'Keefe
John and Yvette Oldendorf
Gordon and Midge Olsen
David B. Olson
Jack Olson and Yvonne Leiser-Olson
Ruth Olson and Anthony Morley
Jann and Renee Olsten
William G. Opsahl
Don and Louise Ostergren
Constance Otis
Brian and Julia Palmer
Park Tool USA
John Parsons and Joan Bennett
Parsons
Sally and Tom Patterson
John and Linda Peck
Ann M. Petersen
Pfizer Foundation
Robert R. Piche
Mark Poland
Peggy J. Pond
Julianne and Stephen Prager
Scott and Amy Priddy
Peggy and Diethelm Prowe
Prudential Foundation Matching Gifts
Anne and Brian Purrington
Craig Alan Rees
Deena and Steve Reisman
Charles and Susan Richardson
Lori Ricke and Eric Dunn
Russell Riley
David Rischall
Jean Roberts
Richard Rogers
Natalie Roholt
Jean Ronnei
Janice K. Root
Brynild Rowberg
Curtis L. Roy
Paul Rundell
Jeff Rupp
Tom and Lynn Rusch
Jeffrey Russum

\$100-\$499 (continued)

Alan and Sally Ruvelson
Edwin and Jennifer Ryan
Dick Sarafolean
Nichole Schaefer
Thomas and Anne Schapman
John E. Schaubach
James Schermerhorn
John Schlagel
Peter Schlesinger
Anne and Jason Schlukebier
Peter M. Schmitt
Alward R. Schneider
Marcia Schultz
Lawrence and Mary Schwanke
Peter and Linda Schwartz
Jennifer O. Shankle
John and Kris Shasky
Charles and Judith Shepard Family
Trust of the Fidelity Charitable Gift
Fund
Stan and Lucy Shepard
Sharon and Hiro Shinomiya
Scott and Louise Sicard
Michael Sis
Rev. Theodore Sitz
Sivertson Gallery
Glen Skovholt
Cordelia S.C. Pierson and Stephen
J. Smela Fund of The Minneapolis
Foundation
Elaine Smith
Jennifer and Brad Smith
Theresa M. Smith
Matthew Sonnek
John and Marsha Soucheray
St. Paul Travelers Foundation
Kathryn Steinberger
Elizabeth Stejskal and Tim Whisler
Brian and Kate Stephany
Nancy and John Strom
Gerry and LeAnn Sweet
Denise Synsteliën
Tennant Foundation
Peter and Julie Theismann
Teresa Thews and Paul Scobie
Alan and Jean Thiel
Karen Thimmesch
Marlys Thomas
Stuart Thomas
Eric and Tracey Thompson
Kent and Kathy Thompson
Gof and Mary Thomson
Steven and Georganne Thorne
Susan Thornton and Gordon Apple
John and Sue Tibstra
Thomas Tommet
Walter N. Trenerry
Eleanore J. Troxel
Chuck Tryon
Michael Turbes and Barbara Sterner
Twin Cities Bicycling Club
United Way - Greater Twin Cities
Josephine Vania
Gen. John W. Vessey
Ray and Lynette Vlasak

Jane and Ed Wachutka
Alice and Fred Wall Family Foundation
Bill and Judy Walter
Doug and Peg Wangersteen
Thomas M. Wappes
Kevin and Gretchen Warnke
Weber Electric
Robert and Mary Weber
Caroline Webster
Leon and Melinda Webster
Tim Wegner
Charlotte Wentzell
June Wheeler and Peter Herzog
James White
Robert Wiens
Shirley Wilde
Frank and Frances Wilkinson
Suzann Willhite and Kristin
Siegesmund
Donald and Beate Winston
Paul P. Wittkopf
Robin and Seth Wolpert
Teresa Workman
Elaine B. Yost
Nick and Yonok Zeller
Clive and Janet Zent
Patrick Zueli

Community Partners

Amish Hills Trail
Anoka Area Gardeners
Bemidji Cross Country Ski Club
Cedar Lake Park Association
Central Lakes Trail
Chester Wood Trails Group
Cuyuna Lakes Trails Association
Dodge County Trails Association
Fort Snelling State Park Association
Friends of Camden State Park
Friends of Casey Jones Trail
Friends of Father Hennepin State Park
Friends of Fort Ridgely
Friends of Glacial Lakes State Park
Friends of Itasca State Park
Friends of Jackson County Trails
Friends of Lake Bemidji State Park
Friends of Lake Maria State Park
Friends of Maplewood State Park
Friends of Minneopa
Friends of O'Brien State Park
Friends of the Cannon Valley Trail
Friends of Wild River State Park
Gateway Trail Association
Gitchi Gami Trail Association
Glendalough State Park Advisory
Committee
Isanti County Environmental Coalition
Lake Louise State Park Association
Lake Minnetonka Parks & Trails
Minnesota Nordic Ski Association
Minnesota Orienteering Club
Monson Lake State Park Improvement
Association
Northstar Trail Travelers
Prairie Visions
Renville County HRA/EDA

Community Partners (continued)

Sibley State Park Improvement
Association
Southeastern Minnesota Association
of Regional Trails (SMART)
Superior Hiking Trail Association
Twin Cities Bicycling Club
In-kind contributions
Golden's Deli
Rudi Hargesheimer and Judy Stern
Steven Hettig
Mark Lissick
Microsoft
Midwest Mountaineering
Minnesota Trails magazine
Gary Alan Nelson
Alan and Jean Thiel
Walker Appraisals

Tributes and memorials

Steven and Kathryn Blonigan
*In honor of Meg Otten and Randy
Malecha's wedding*
Brett Feldman
In memory of Kathy Bussard
In memory of Margie Meier
Marion Janikowski
In memory of Laurie Janikowski
Eric and Margit Johnson
*In honor of Meg Otten and Randy
Malecha's wedding*
Marlys Johnson and Robert Nesheim
*In honor of Mike Wilke and the
"Bianchi"*
David J. Madgett
In honor of Ms. Kristin Schwarze
Annette L. Meyer
In memory of Roy W. Meyer
Wayne and Patrice Schanus
*In honor of Meg Otten and Randy
Malecha's wedding*
Jennifer O. Shankle
*In honor of Meg Otten and Randy
Malecha's wedding*
Paul Thiboutot
*In honor of Meg Otten and Randy
Malecha's wedding*
Elaine and James Tohal
In memory of Sandra Gregersen
John and Sheila Uringi
*In honor of Meg Otten and Randy
Malecha's wedding*
Jesse Winsell
In honor of Doug & Eileen
Tim & Bonnie Hutchins



Thank you to our corporate sponsors

• Cove Point Lodge

www.covepointlodge.com
P.O. Box 504, Highway 61
Beaver Bay, MN 55601
Phone: (218) 226-3221

• Erik's Bike Shop

13 Minnesota locations



www.eriks bikeshop.com

- Bloomington - Burnsville
- Coon Rapids - Dinkytown
- Eden Prairie - Maple Grove
- Oakdale - Rochester
- Roseville - St. Cloud
- St. Louis Park
- Vadnais Heights - Woodbury
Phone: (612) 869-BIKE
www.eriks bikeshop.com

• Golden's Deli

275 E. 4th St.
St. Paul, MN 55101
Phone: (651) 224-8888

• Great River Energy



GREAT RIVER
ENERGY®

www.greatriverenergy.com
P.O. Box 800
Elk River, MN 55330
Phone: (763) 241-2293

• Lutsen Resort & Sea Villas

P.O. Box 9
Lutsen, MN 55612
Phone: (800) 258-8736

• Midwest Mountaineering

309 Cedar Ave. S.
Minneapolis, MN 55454
Phone: (612) 392-2475

• Minnesota Trails



522 Sinclair Lewis Ave.
Sauk Centre, MN 56378
www.mntrails.com

• Quality Bicycle Products



6400 105th St. W.
Bloomington, MN 55438
Phone: (952) 941-9391
Web site: www.qbp.com

Board of Directors

Executive Committee

F. M. (Tim) Farrell, President
Marcia Hillestad, Vice President
Robert O. Erickson, Treasurer
David Dixen, Secretary
Ann Johnson, Director at large
Grant Merritt, Director at large
Robert Nesheim, Director at large
Jeff Olson, Director at large
Michael Prichard, Director at large
Eleanor Winston, Director at large

Directors

Carol Backstrom
Bruce Blackburn
Barbara Burgum
Kathleen Connelly
Dudley Edmondson
Elaine Elnes
Timothy Eschweiler
Peter Gove
Rudi Hargesheimer
Hubert H. "Skip" Humphrey, III
John Lindstrom
David Minge
Charles Mitchell
Jonathan Morgan
Bill Morrissey
Nan Upin Murphy
Erik Nelson
Kandace Olsen
William Opsahl
Peggy Prowe
Maureen Reed
Mike Tegeder
Steven G. Thorne
Leonard Wabasha
Thomas Warth
Robin Wolpert
Sue Woodrich

Honorary Directors

Rollis Bishop
Sen. David Durenberger
Thomas T. Dwight
Martin Kellogg
Howard Olson
Mrs. Thomas C. (Betty) Savage
Peter Seed
Henry Somsen

Staff

Dorian Grilley, *Executive Director*
Ric Ahern, *Land Acquisition Manager*
Judy Erickson, *Government Relations Director*
Brett Feldman, *Communications Director*
Beth Hynes, *Database Administrator*
Joe Jeruzal, *Administrative Assistant*
Erin McGonagle, *Development Director*
Peter Morgan, *Membership Assistant*



Parks & Trails Council of MN
275 E. 4th St., Suite #642
St. Paul, MN 55101-1651

Nonprofit Org.
US Postage
PAID
St. Paul, MN
Permit #4936



Photo by Mark Lissick, WildLight Nature Photography

Parks & Trails Council of Minnesota
275 E. 4th Street, Suite #642
St. Paul, MN 55101
Phone: (651) 726-2457 or (800) 944-0707
Fax: (651) 726-2458
E-mail: info@parksandtrails.org
www.parksandtrails.org

Published by the Parks & Trails Council of Minnesota, March 2008
Cover photos by Dudley Edmondson, Raptor Works Photography – www.raptorworks.com
Editing and design by Brett Feldman