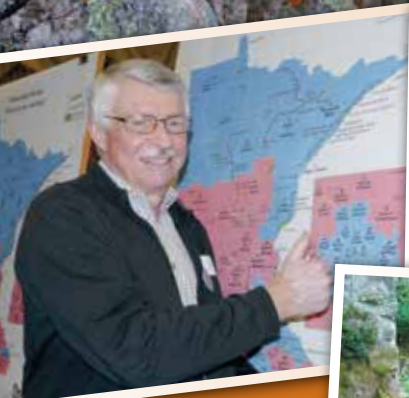


Island saved at Lake
Vermilion State Park



Day on the Hill 2014



Tour near land saved at Banning State Park



Bike MN event at Jay Cooke



Friends of Casey Jones Trail meeting with legislator
during Day on the Hill



2014 Annual Report



Cascade River State Park (photo by Rudi Hargesheimer)

Our Mission

To acquire, protect and enhance critical land for the public's use and benefit.

Our Vision

We envision an interconnected system of parks, trails, waterways, natural areas and open spaces that provide all Minnesotans with outstanding outdoor recreational opportunities and that preserve the natural diversity of our state.



Michael Tegeder, President

Brett Feldman, Executive Director



Dear Friends

Working together to achieve our mission

Looking back to 2014 we can be very proud of what we've accomplished on behalf of Minnesota's parks and trails. Perhaps one of the most exciting developments that happened was when the Legislature passed a bill to fund the acquisition and development of 13 state trail projects that had been on hold for four, long years. During those years of "waiting" we continually worked with volunteers and concerned community members who kept hope that soon these projects could get underway. That hope has been fulfilled.

These community members understand the value that trails can bring to their communities. And when we work together we can show our legislators the groundswell of support these trails have and convince them to invest for the public good. We've all witnessed the transformation that occurred with the Root River State Trail in Lanesboro--a rural city that was waning until the trail came in. Now it's known as the bed and breakfast capital of Minnesota with trail tourism an essential part of the mix. With these 13 state trail projects underway, the ripple effects of trail tourism will begin to revitalize these communities while connecting more people with the outdoors.

Last year was also important for the land acquisition projects we completed for Minnesota parks and trails. The value of land varies dramatically across our state and often the pristine places protected by our parks and trails are some of the most desirable (and therefore expensive) land around. We all appreciate the beauty of the natural landscape and want to enjoy it. Luckily Minnesotans also value the intrinsic value of such places enough to ensure everyone can enjoy them in a protected state.

The island we protected for Lake Vermilion State Park in 2014 is a prime example of highly valuable land that deserves to be enjoyed by all. With the boost that Lake Vermilion State Park received from the 2014 bonding bill to continue developing state-of-the-art visitor amenities, we're certain many, many people will visit and appreciate the amazing view protected by the acquisition of this island.

Thank you for your support!

A handwritten signature in black ink that reads "Michael Tegeder".

Michael Tegeder,
President of the Board

A handwritten signature in black ink that reads "Brett Feldman".

Brett Feldman,
Executive Director

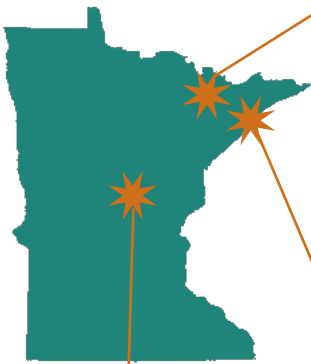
Land Protection



Preserving special places for future generations

Minnesota has outstanding parks and trails that not only protect out state's most significant ecological communities, but also ensure unparalleled opportunities for the public to recreate and learn about our natural and cultural heritage. The land protection work of the Parks & Trails Council saves those special places that are most vulnerable to being lost to incompatible development. We acquire the land and hold it in trust for the park or trail until it can be officially incorporated. Since 1954 Parks & Trails Council of Minnesota has helped to acquire nearly 11,000 acres of land for Minnesota's state and regional parks and trails.

2014 HIGHLIGHTS



Cuyuna Lakes State Trail

In 2002 Cuyuna Lakes State Trail was authorized by the Minnesota Legislature as a state trail to be built within Cuyuna Country State Recreation Area and connecting to the nearby communities. However with no funds appropriated by the legislature, the trail required grassroots efforts to be built. In 2004 Parks & Trails Council acquired several easements necessary for approximately 1.8 miles of the trail, which are now completed as part of the eight miles of paved trail. In 2014 these easements were conveyed to the state.



Island at Lake Vermilion State Park

In January 2014, Parks & Trails Council saved a critical 2.9-acre island in Lake Vermilion for the state park, which is still being developed. This forested island is on the edge of Cable Bay where it is visible from 60 percent of the park shoreland, playing a starring role in the ruggedly majestic viewshed of the park.

The urgency to acquire this land stemmed from the transformation underway in Lake Vermilion where nearby islands are quickly being developed with housing. Working with the DNR, we were able to expedite this project so it was incorporated into the State Park the same year we acquired it.



Forest in Temperance River State Park

Most visitors to Temperance River State Park explore the area along Lake Superior where the campground and hiking trails provide breathtaking views. Yet, the park also offers miles of backcountry hiking trails within forested land shared by the Superior National Forest. In 2013 there remained a single 40-acre parcel within this forest area that was privately owned. By acquiring one half interest in this land, Parks & Trails Council safeguarded its use for the park as intact, hardwood forest. This land will remain vital habitat for wildlife and protect the headwaters for a perennial stream flowing directly into Lake Superior.



Baptism River at Tettegouche State Park (photo by Gary Alan Nelson)

LAND CONVEYED TO PUBLIC OWNERSHIP BY PARKS & TRAILS COUNCIL IN 2014

Location of Land	Acres	Land Value	Year Acquired	Description
Lake Vermilion State Park	2.90	\$279,250	2014	Rocky, pine forested island nestled within Lake Vermilion's Cable Bay.
Temperance River State Park	40.00 (½ interest)	\$30,000	2013	Within large, intact hardwood forest that includes the headwaters of a perennial stream flowing directly into Lake Superior. One half interest on 40 acres.
Cuyuna Lakes State Trail	9.25 (1.8 miles approx.)	\$21,000	2004	Easement necessary to complete development of the trail.
TOTAL	32.15	\$330,250		

LAND HELD IN TRUST BY PARKS & TRAILS COUNCIL AT 2014 YEAR END

Location of Land	Acres	Land Value	Year Acquired	Description
Banning State Park	108.39	\$250,000	2013	Shoreline along the Kettle River studded with boulders rising to a forested bluff. Acquired in partnership with Minnesota Climbers Association.
Crow Wing State Park	5.00	\$135,000	2004	Long-term holding acquired as excess, non-park land as part of a project that expanded Crow Wing State Park by 55 acres.
Finland State Forest (for Crosby Manitou State Park)	3.50	\$16,400	2004	Remnant land acquired as part of a land exchange with Lake County that helped expand Crosby Manitou State Park by 2,060 acres.
Sibley State Park	153.06	\$460,000	2014	Rolling grassy hills at SE corner of Sibley State Park necessary to build a spur for the Glacial Lakes State Trail to lead into the park.
Superior Hiking Trail (at Devil's Track River near Grand Marais)	40.00	\$28,000	1995	Long-term holding of land to which we have granted a permanent easement to the Superior Hiking Trail for use as part of the trail with a primitive campsite.
Tettegouche State Park	2.50	\$19,200	2013	Forested wetlands providing scenic views from Hwy. 31. and a quarter-mile buffer between highway and the Sawtooth Trail. Donated by Mark and Joan Strobel.
TOTAL	312.45	\$861,400		

Research & Public Policy

Being an independent, honest and forthright voice

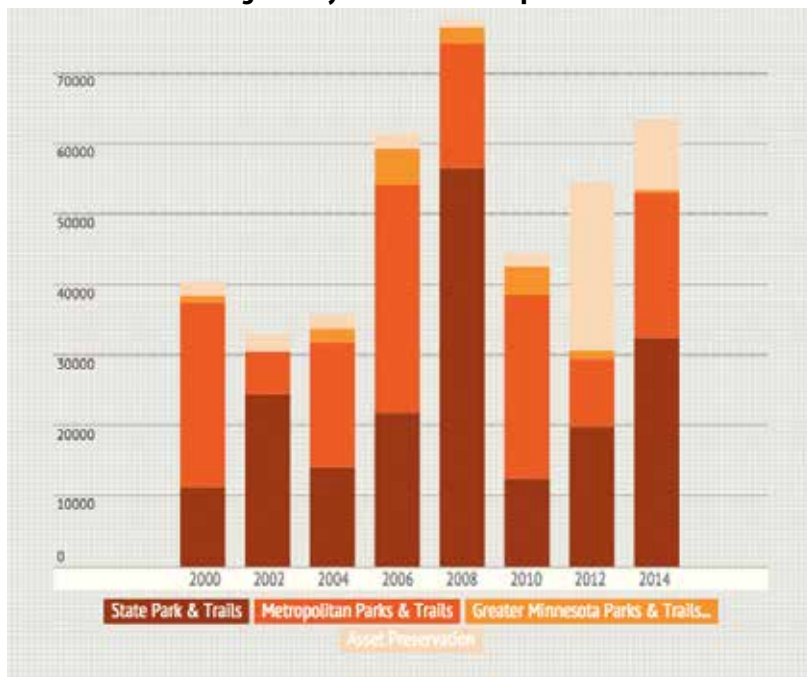
The Parks & Trails Council of Minnesota's ability to effectively communicate the needs of the Minnesota's park and trail systems and its users to legislators and government officials has made it the preeminent voice for parks and trails throughout Minnesota and at the Capitol. Always determined and forward-thinking, P&TC heads into each legislative session armed with a comprehensive agenda seeking necessary and smart investments in our park and trail systems.

In 2014 parks and trails receive largest bonding bill investment in six years

In 2014 Gov. Dayton signed a capital investment bill into law that included \$50 million for park-and-trail-specific projects as well as \$10 million for asset preservation projects on all DNR-managed properties (e.g., state parks, state forests, wildlife refuges, scientific areas). Overall, the 2014 package increased bonding dollars for parks and trails by nearly 75% compared to the 2011-12 bonding cycle.

This was the single largest capital investment state parks and trails received since Lake Vermilion was acquired in 2008 to become Minnesota's 67th state park.

Bonding History for Minnesota's parks and trails



One key priority for the Parks & Trails Council was ensuring that the final bill included funding for state trail projects that had been on hold since 2010. Working with our partners and key legislators, we succeeded in funding 13 state trail projects totalling \$17.7 million. Many of these projects are extensions to connect trails into cities and parks. Regrettably, one trail, the Casey Jones State Trail, was cut from the bill during the final hours of negotiation despite the project's strong merits and local support. Parks & Trails Council continues to work with local groups, the DNR, and state legislators to develop this trail.

In addition to the state trail projects, the bonding bill included a significant appropriation of \$14 million to continue the development of Lake Vermilion State Park. Other projects funded included the Red River State Recreation Area, Fort Snelling State Park, the Metropolitan Regional Park System, and numerous other regional park and trail projects in Greater Minnesota.



Heartland State Trail



Budget increased for state parks and trails with supplemental budget bill

Minnesota had a budget surplus in 2014 that allowed legislators to supplement the previous year's budget appropriations. Of the \$1.23 billion surplus, \$2 million went toward the operation and maintenance of state parks and trails. These funds came at a crucial time, as the Division of Parks and Trails (PAT) budget is still trying to recover from the global recession of 2009. According to PAT director Erika Rivers, the additional funding secured 16 positions and 100,000 hours of staff time for fiscal year 2015. Also included in the supplemental budget was \$350,000 to develop a segment of the Willard Munger State Trail in Chisago County in honor of the late James L. Oberstar.

2014 BONDING FOR PARKS AND TRAILS

Minnesota values our interconnected systems of parks and trails. But a rapidly growing population and aging infrastructure means more must be done to protect these outdoor treasures that are so essential to our economy, our health and our outdoor way of life. The 2014 bonding bill is a vital component for ensuring that necessary and wise investments are made on behalf of Minnesota's state, metro and greater Minnesota regional systems.

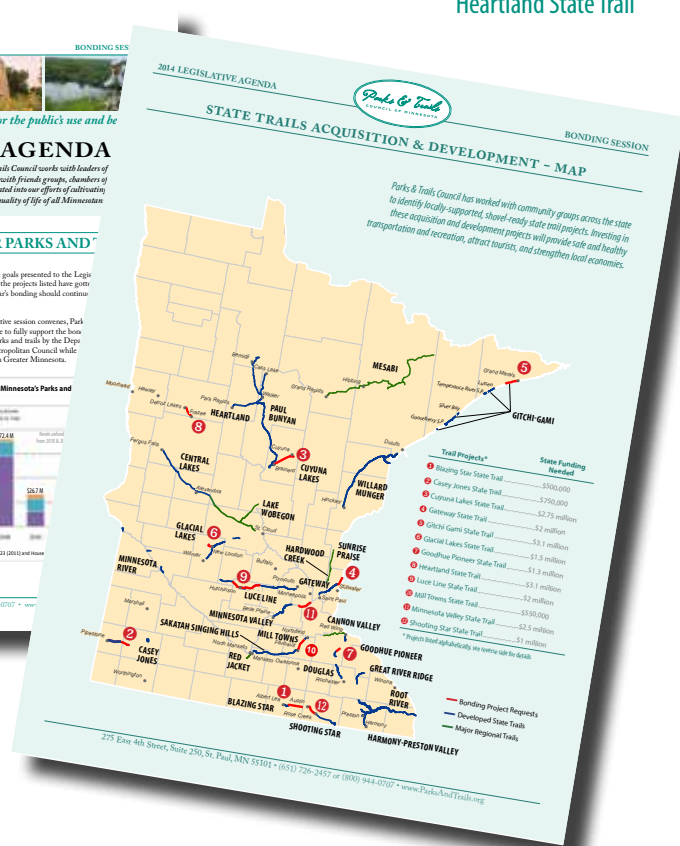
During the two biennia prior to the passage of the Legacy Amendment in November 2008, Minnesota appropriated \$50 to \$70 million in Capital Bonding per biennium to parks and trail projects. Regrettably, in the two biennia since the Legacy Amendment's passage, capital investment in Minnesota's parks and trails has been reduced by more than 50 percent.

Minnesota's park and trail systems have substantial capital needs. In their budget planning for years 2011-2020, the Department of Natural Resources reports capital needs of more than \$60 million per biennium to provide deferred maintenance, land acquisition, and park and trail development. The Metropolitan Council reports capital bonding needs in excess of \$10 million biennially to develop and expand park and trails throughout the Twin Cities. And while the long-term needs for developing and expanding Greater Minnesota systems of parks and trails are still being quantified, they too are significant.

The Parks & Trails Council of Minnesota, as part of its mission, advocates for the acquisition, development and operation of parks and trails throughout the state. Our following agenda, which outlines \$99.1 million in bonding priorities for parks and trails in

2014, builds on the goals presented to the Legislature in the past. This year's bonding should continue already made.

As the 2014 legislative session convenes, Park urges the legislature to fully support the bond bill on behalf of parks and trails by the DNR Resources and Metropolitan Council while emerging system in Greater Minnesota.



Our 2014 Day on the Hill

The annual Parks & Trails Council's "Day on the Hill" event was held on March 4, 2014. People came from far and wide—the farthest being 200 miles—to learn about the issues facing parks and trails and to make their voices heard at the State Capitol. Bonding was the focus of discussions with the Minnesota Legislature preparing to pass a bonding bill. Many critical park and trail projects were in need of bonding dollars.

The event featured presentations from the leaders of all three of Minnesota's park systems--state, metro and Greater Minnesota. In addition, the following legislators gave brief presentations, Sen. Matt Schmit (DFL, Red Wing), Sen. Carrie Ruud (R, Breezy Point), and Rep. Matt Dean (R, Dellwood).

Finally many in attendance headed out to meet one-on-one with legislators—at least 23 representatives and 21 senators received a visit.





Member & Community Engagement



Working together to protect & enhance special places

Our members make our mission of acquiring, protecting and enhancing critical lands possible. Parks & Trails Council works to keep members informed of issues in state and regional parks and trails throughout the year so they continue to understand and value of these places. We also provide opportunities for members to gather and experience the treasured places we work on behalf of. A critical way members actively roll up their sleeves to protect and enhance Minnesota's parks and trails is through the work of Friends Groups, which Parks & Trails Council support with technical assistance and opportunities to unify their efforts by learning from each other.

10th Annual BIKE MINNESOTA! with Parks & Trails



Over 75 bicyclists participated in the 2014 Bike Minnesota with Parks & Trails Council event that was held at Jay Cooke State Park over Labor Day weekend.

The riders covered 150 miles over three days. The Munger State Trail, which runs through Jay Cooke State Park was a significant portion of the miles biked.

Former congressman and retired judge, David Minge, coordinated program stops that highlighted the local community. Highlights included a tours of:

- Fond du Lac Community College
- Carlton County Historical museum
- Esko Historical Museum
- Janaki Fisher Merritt Community Supported Agriculture Farm
- Moose Lake Fire Museum
- Lake Superior College Emergency Response Training Center
- Morgan Park home

Friends Group Support



Many parks and trails receive invaluable support from volunteer-based groups who help in a variety of ways from organizing clean-up events and naturalist programs to acquiring land and advocating for the trail or park.

Parks & Trails Council supports these efforts in various ways.

Fiscal Sponsorship

In 2014, P&TC supported 24 Friends Groups by providing fiscal sponsorship services that enabled them to receive nonprofit status. P&TC assumes the responsibility of creating and maintaining accounting records. Through this relationship Friends Groups were able to undertake a number of projects that enhanced our states parks. At the end of 2014 P&TC held \$166,258 on behalf of these 24 Friends Groups:

- | | |
|--|---|
| • Central Lakes Trail Association | • Friends of Murray County Parks |
| • Friends of Anderson Park | • Friends of Nerstrand Big Woods State Park |
| • Friends of Bertram Chain of Lakes | • Friends of Whitewater State Park |
| • Friends of Jackson County Trails | • Friends of William O'Brien State Park |
| • Friends of Lake Maria | • Frontenac State Park Association |
| • Friends of Lashbrook Park | • Goodhue Pioneer Trail Association |
| • Friends of Maplewood State Park | • Isanti County Sportsmen Club |
| • Friends of Scandia Parks and Trails | • KIDFUN |
| • Friends of Wild River State Park | • Minnesota Horse Council |
| • Gateway Browns Creek Trail Association | • Minnesota Wilderness Trails Alliance |
| • Glacial Ridge Trail Association | • Sibley State Park Improvement Association |
| • Friends of Father Hennepin State Park | |
| • Friends of Hayes Lake | |



60th Annual Dinner



Keynote speaker Sen. Dave Durenberger (left) with wife Susan Foote and P&TC executive director Brett Feldman.

The keynote speaker at our 60th Annual Dinner, held on March 18, was former Senator Dave Durenberger. During his tenure as U.S. Senator, 1978–1995, Durenberger helped establish the Mississippi National River and Recreation Area, helped secure appropriations to implement the landmark Boundary Waters Canoe Area Act of 1978, authored vital Clean Air and Water Act amendments and was the driving

force behind numerous other important pieces of environmental legislation and appropriations.

At the annual dinner Sen. Durenberger detailed the parks and trails movement in Minnesota with a timeline dotted with fascinating people, tremendous accomplishments and pristine places.



Reuel Harmon Award recipient David Minge (center) with P&TC executive director Brett Feldman and president Mike Tegeder.

The Reuel Harmon Award was awarded to former Congressman and judge David Minge. For the past decade David Minge has used his charismatic leadership to envision, organize and execute the Parks & Trails Council's annual bike tour. It has been a labor of love fueled by his deep appreciation for the outdoors, bicycling and engaging with people.

Regardless of the region of the state in which the event is held, David is always recognized as a great ambassador for Parks & Trails Council, bringing with him a band of merry followers.

Magney Circle Events

The Magney Circle is our leadership group of individuals who give a contribution of \$500 or more per year. With this commitment comes opportunities to gain in-depth knowledge of our work through tours, presentations and special events. In 2014, Parks & Trails Council hosted two events for Magney Circle members.

Rustic State Park Architecture Presentation



The first event was a presentation by architectural historian Rolf Anderson on state park rustic architecture. Rolf's talk highlighted park buildings throughout the state ranging from the iconic log buildings at Itasca and

Scenic State Parks to the colorful stone buildings at Flandrau and Blue Mounds State Parks.

Bouldering at Banning State Park



The second Magney Circle Event was a tour of the land acquired for Banning State Park in 2014 by Parks & Trails Council in partnership with the Minnesota Climbers Association. The land is one of the few places in Minnesota that offers

prime rock boulders for climbers and boulderers. We heard from officials from the local city of Sandstone and the Department of Natural Resources about the impact that this land acquisition will have to the city and for state parks. Banning has become the fifth state park to allow climbing now that this land is part of the park. Magney Circle members had a chance to try bouldering themselves with the guidance of Minnesota Climbers Association members.



Gitchi Gami State Trail (photo by DNR)

Financial Health



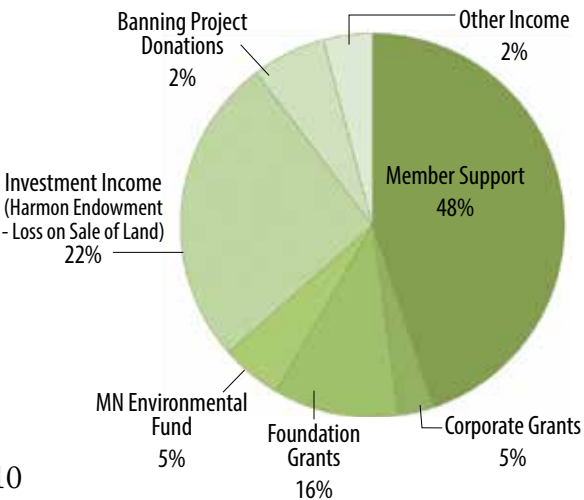
Ensuring fiscal accountability for our supporters

STATEMENT OF ACTIVITIES

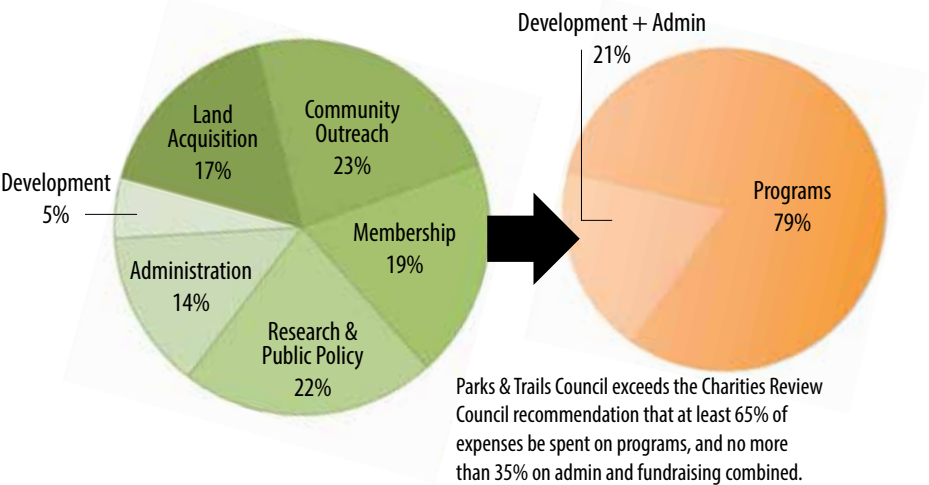
Support & Revenue	Unrestricted	Temporarily Restricted	Total
Grants & Contributions	\$ 236,326	\$ 35,000	\$ 271,326
Membership Support	179,534	-	179,534
Special Events (net expenses of \$12,920)	175	-	175
Investment Income	138,904	-	138,904
Loss on Sale of Property ^a	(1,267)	-	(1,267)
Other Income	24,405	-	24,405
Satisfaction of Program Restrictions	11,125	(11,125)	-
Total Support & Revenue	589,202	23,875	613,077
Expenses	Unrestricted	Temporarily Restricted	Total
Land Acquisition	99,096	-	99,096
Community Outreach	137,855	-	137,855
Membership	110,966	-	110,966
Research & Public Policy	129,659	-	129,659
Administration	80,541	-	80,541
Development	30,686	-	30,686
Total Expenses	588,803	-	588,803
Change in Net Assets	399	23,875	24,274
Net Assets at Beginning of Year	7,156,497	11,625	7,168,122
Net Assets at End of Year	\$ 7,156,896	\$ 35,500	\$ 7,192,396

(a) Parks & Trails Council holds land in trust for public partners that occasionally declines in value by the time of sale. This decline in value is absorbed by P&TC's Samuel H. Morgan Land Fund.

Revenue



Expenses



Parks & Trails Council exceeds the Charities Review Council recommendation that at least 65% of expenses be spent on programs, and no more than 35% on admin and fundraising combined.

STATEMENT OF FINANCIAL POSITION

Assets	2014	2013
Current Assets		
Cash & Cash Equivalents	\$ 4,347,814	\$ 4,826,077
Pledges Receivable	45,200	-
Prepaid Expenses	10,537	10,922
Accounts Receivable	335	6,911
Protected Property	959,326	530,834
Equipment - Net	15,616	4,100
Investments	2,517,142	2,131,549
Insurance Policy	79,565	76,092
Total Assets	\$ 7,975,535	\$ 7,586,485
Liabilities & Net Assets	2014	2013
Current Liabilities		
Accounts Payable	\$ 116,196	\$ 10,701
Accrued Expenses	7,540	6,448
Deferred Revenue	800	-
Funds Held for Friends Groups	166,258	150,837
Long-term Liabilities		
Accounts Payable	230,000	-
Notes Payable	262,345	250,377
Total Liabilities	783,139	418,363
Net Assets		
Unrestricted	7,156,896	7,156,497
Temporarily Restricted	35,500	11,625
Total Net Assets	7,192,396	7,168,122
Total Liabilities & Net Assets	\$ 7,975,535	\$ 7,586,485

NET ASSETS BY FUND

Fund	2014	2013
General Fund (Unrestricted)	\$347,466	\$ 333,009
Samuel H. Morgan Land Acquisition Fund ^b	4,637,288	4,691,939
Reuel Harmon Endowment Fund ^c	2,172,142	2,131,549
Temporarily Restricted	35,500	11,625
Total	\$7,192,396	\$ 7,168,122

(b) The Samuel H. Morgan Land Acquisition Fund is a revolving account that covers acquisition costs and is reimbursed when land is transferred to a public agency.

(c) The Reuel Harmon Endowment Fund provides up to 5% of its balance annually for general operations.

Financial information is based on an independent auditor's report conducted in accordance with auditing standards for the years ended Dec. 31, 2014 and 2013. To obtain a copy of the complete audit, please contact the Parks & Trails Council of Minnesota office at 651-726-2457.

Samuel H. Morgan Land Acquisition Fund

As the founders of the Parks & Trails Council bore witness to pristine lands being sold and torn up for development, they made a commitment to dedicate their resources to a strategically managed land fund. The Samuel H. Morgan Land Fund operates as a revolving account that gets spent many times over to ensure precious lands are acquired for protection and incorporation into Minnesota's park and trail system. Parks & Trails member-supporters have added to this fund over the years, making it a powerful force in the effort to preserve parks and trails.

When Parks & Trails Council transfers land to a public agency, it is sold at the current fair market value so that funds can be returned to the account, where they are used to purchase the next critical parcel. Volunteer attorneys and their firms from around the state generously donate all legal expenses.

Thank you to 2014 supporters



The generosity of individuals, organizations, businesses and foundations makes the work of Parks & Trails Council possible. Thank you!

Individual, Corporation & Foundation Donors

Magney Circle Members

Recognizing our leadership circle of individuals who gave a gift of \$500 or more for general operations in 2014.

\$5,000 and more

3M Foundation
The Athwin Foundation
Keith and Louise Fester
The Halleck Fund of The Saint Paul Foundation
Minnesota Climbers Association
Minnesota Environmental Fund
Katherine M. Nielsen
Patrick and Aimee Butler Family Foundation
Peter and Linda Seed
Fred and Eleanor Winston
WM Foundation

\$1,000 - \$4,999

Anonymous
Bruce and Martha Atwater
Bank of America
Richard "Dick" and Mary Brainerd
Peter K. Butler
Gary R. Carlson
Chizek Family Fund
David Chizek
Mike and Julia Costello
Ruth and Bruce Dayton
The Dolan Family Fund of The Minneapolis Foundation
Mary C. Dolan
Robert and Nancy Erickson
Erik's Bike Shop
Tim and Noreen Farrell
Elizabeth Haugen and Brett Feldman
Jon and Laura Gilmore
Greystone Foundation
Mike Helgeson
Theresa Horan
Jane Levin and Judith Reisman Charitable

Fund within the Raymond James Charitable Endowment Fund
Martin and Esther Kellogg
Kathy and Allen Lenzmeier
Judith Reisman and Jane Levin
The Longview Foundation - Lucy and Robert Mitchell
The Mennonite Foundation
Michael and Lyne Prichard Fund of Fidelity Charitable

Robert and Lucy Mitchell
Jonathan and Martha Morgan
Richard and Joan Newmark
Olson Charitable Fund of Fidelity Charitable
David B. Olson
Thomas and Susan Pavey
Kem Pomeroy
Michael and Lyne Prichard
Richard Newmark and Joan Newmark Charitable Gift Account at Schwab Charitable Fund
Tom and Christine Stoa
The Stoa Fund of Vanguard Charitable Endowment Program
Mark and Joan Strobel
Rupert and Jeanne Strobel
Michael V. Tegeder
Walt McCarthy and Clara Ueland
Tom and Diane Witzig
Steve L. Young

\$500 - \$999

Karla and Brad Anderson
Dorothy H. Anderson Ph.D.
Carsten O. Bjornstad
Blue Cross & Blue Shield of MN
Ms. Thelma Boeder
Leila Brammer
Henry and Nancy Brantingham
Peter and Nancy Breyfogle
Paul H. Brown
Mr. and Mrs. William R. Buell
Patricia A. Colburn
Carolyn J. Sampson and Kathleen A. Connelly
Jean and Joe Crocker
Donald L. Janes Fund Charitable Gift Account at Schwab Charitable Fund
Senator Dave Durenberger and Susan Foote
Timothy, Emily, John, Ava and Luke

Eschweiler
Sheila R. Faulkner
Harvey and Andrea Feldman
Joel Martin and Lisa Filter
Gail L. Fiskewold
Charles and Iris Fried
Gateway-Brown's Creek Trail Association
Kevin Gregerson
John Hall and Julie Gugin
Mary Hauser
Richard Heine
Bill and Linda Holley
Don Janes
Jim and Penny Langland Charitable Fund of Fidelity Charitable
Bruce E. Johnson
Norbert L. Johnson
Richard E Keir
Mark Larson and Mary Kennedy
Lynette W. Kepp
Katherine L. Kladstrup
Penny and James Langland
Chuck and Cindy Laszewski
Pam and Harry Lienke
Mark & Jackie Nolan Family Fund of The Saint Paul Foundation
James Massee & Sydney Nesbitt
Massee
Mike and Patricia Mattson
Sarah and Andrew Meister
Tim and Mary Miley
Carol J. Mizuno
Bob Nesheim and Marlys Johnson
Robert and Emily Nesvold
Mark and Jackie Nolan
Jim Nystrom
John and Yvette Oldendorf
Keith and Carol Ottoson
Michele J. Peter
Veronica Jaralambides and Chris Polston
Peggy and Diethelm Prowe
Jim Hart and Maureen Reed
Robert P. Rusch
Dominique Conseil and Misato Sakai
Robert Secor
Dave and Linda Simpkins
Elaine Smith
Thomas B. Stirling
John and Teresa Swoyer
Steven G. Thorne
United Health Group
Nan Upin and Ed Murphy

Jane and Ed Wachutka
Lee Wenzel
Bruce Hendrickson and Laura Wolf
Anonymous
Kurt E. Zuppke

\$100 - \$499

John and Tracey Abbott
Dale Aden
John M. Adolphson
Ms. Raylene Ahlgren
Dr. David A. Ahlquist
Bob and Linda Albert
Joe and Cathy Amato
Ameriprise Financial Gift Matching Program through Benevity
Paul C. Amidon
Beth Amundson
Aileen M. Anderson
Judith A. Anderson
Jane Andrews
Scott Armitage
Patricia Arndt
Tom Arneson
Diane M. Ashby
Michael F. Bailey
Shari Ballard
Pat and Heinrich Bantli
James Bartol
Malcolm D. Bastron
Cheryl Bates
Jonathan and Christine Bayer
Stephen Befort
Norman Berghuis
Dale and Janet Beumer
Ingrid Beyer
Larry and Judy Biederman
Bob Bierscheid
John Bina
Gerald Bird
Bruce Blackburn
Bill and Beth Blank
Mary and Jeff Blaschko
Fred Bogott
Gary and Valerie Bollinger
Mark and Sara Bonk
Craig A. Bonn
Borghild G. Brauer Trust
Jason Beowolf Boswell
Karen I. Bowen
Andrew Brantingham

Robert A. Brekken
 Gerald C. Bren
 Richard Brennan
 Nancy Odden and Doug Britton
 Dan and Pat Brockton
 Gregg and Robin Brooksbank
 Edward Burke
 Ronald Burley
 Michael G. Burnett
 Sally and Michael Burns
 Jeffrey Byers
 Joseph R. Cade
 John Capecchi
 Barbara A. Carlson
 Darlene Carlson
 William A. Carlson
 Frank and Kathie Cerra
 Karen L. Chandler
 Chuck Chism
 Margaret Cleveland
 Michael Cole
 Judith Collopy
 Gary Connett
 Mary K. Connolly
 William M. Cook
 Stewart H. Corn
 Brenda H. Cornell
 Eddie Meissner and John Cowan
 Gayle Coyer
 Ellie Crosby
 John Cross
 Al and Sue Crouse
 Ed and Caryl Crozier
 Steven and Amy Culbert
 Marianne D'Angelo
 Theresa Smith and Mark Danielson
 Dwight Davies
 Janine B. Decoster
 Laurel and Carter Delaittre
 Michael Delong
 Ward Denaway
 Tim Wicker & Carolyn Deters
 Matthew Detert
 Stephen Dickhaus
 Linda Dieleman
 Charlotte and Jeff Disch
 Stacy and Marc Doepner-Hove
 Thomas Donaldson
 Joy and David Drummond
 Dick and Harriet Duerre
 Tom Duffy
 Jane E. Duncan
 Vicki and Bruce Dunlop
 Lori Ricke and Eric Dunn
 Cornelia and Roger Eberhart
 Alison C. Edgerton
 Scott and Susan Eggert
 Robert and Maryann Eliason
 Don and Kathy Ellerton
 Barbara Coffin and Daniel Engstrom
 Kenneth A. Epstein

Elizabeth and Dennis Erb
 Ronald Erpelding
 David and Nancy Erpestad
 Tim and Maria Faacks
 Cynthia Jean Fay
 Kristina Felbeck
 Kay Fellows
 Robert and Yvonne Fiedler
 Gary and Kelli Fifiel
 Ken Flies
 Richard and Carol Flint
 Anne Flueckiger
 Marion Follmuth
 David and Marlene Foster
 H. Dutton and Caroline Foster
 Craig O. Freeman
 Brand and Vycki Frentz
 Friends of Bertram Chain of Lakes
 Regional Park
 Friends of Casey Jones Trail
 Friends of Wild River State Park
 Bruce and Laurel Gaard
 John and Martha Gabbert
 Jim Gabe
 Susan Terry and Barb Gacek
 Theodore V. Galambos
 Carol and Mike Garbisch
 Bruce D. Garbisch
 Laurie A. Chasteen and Gary Douglas
 Laurent
 Burle and Louetta Gengenbach
 R. James Gesell
 Gethsemane Lutheran Church
 Daren Gislason
 Gitchi Gami Trail Association
 Florence K Gleason
 James F. Glockner
 Linda Goepferd
 Melvin F. Goldenbogen
 Edward and Eileen Gordon
 Peter and Mary Gove
 John and Janet Green
 Theresa M. Gregory
 Stacey J Grimes
 Paul Swenson and Kathy Guess
 Mary and David Hagen
 Jeff Hamiel
 Donna Hanbery
 Bob Hartzler
 Edward Hathaway
 Kathryn and John Hatlestad
 Jack and Lisa Hauser
 David and Margaret Hayden
 Paul F. Hayden
 Gary Heaser
 Keith Heaton
 Dennis and Nancy Hebrink
 Roy and Barbara Heinrich
 John Helland
 Victoria Helmuth
 Jim and Maureen Henderson

Joel Hendrickson
 John and Julie Henricksson
 Daphne Walmer and David Herreid
 Dean Hoefer and Beth Van Hoefer
 Paul and Mary Hoff
 Susan and George Hoff
 Eugene Holden
 Kathy Holladay
 Jeffrey C. Holton
 James Luby and Emily Hoover
 Raymond Jorgensen and Judy
 Hoover
 Stephen Horan
 Diana Horrigan
 Pat and Roger Hoyt
 Patsy and Robert Huberty
 David Hunter
 IBM International Foundation
 Cynthia Ihlenfeld
 Barbara and Kenneth Isham-Schopf
 Gregory Janis
 Brian Janssen
 Ms. Carol E. Jennings
 Judy Ostendorff and Ron Jensen
 Bruce and Barbara Jensen
 David and Judy Jerde
 Orv and Kathleen Johnson
 Susan and David Johnson
 David and Peggy Johnson
 Andy and Kristin Johnson
 Clifford G. Johnson
 Walter H. Johnson
 Paul J. Jungquist
 Mark R. Kaczmarek
 James Kalb
 Ron Kaufman
 Meagan Keefe
 Michael Kelberer
 Joe and Joanne Kellogg
 Marjorie Kelly
 Stephen R. Kelly
 Lloyd G. Kepple
 John and Lynda Kern
 George and Julie Kinney
 Seth and Laura Kirk
 Jeff Kirst
 Paul Kloth
 Marjorie Vandehagen and John Knoff
 Rebecca N. Knutson
 Wanda Koehler
 Dr. Linda E. Krach
 Larry and Carolyn Kuechle
 John Kvasnicka
 Brian and Pamela Larson
 Amy Bergquist and Erik Larson
 Mike Lawrence
 Dr. Jeanette H. Leete
 Matthew R. Lehmann
 Tom and Barbara Leppke-Hennig
 James Howitt and Ann Lewandowski
 Robert Cashman and Paulette Lewis

John Lindblom
 Gretchen and David Lindgren
 John Lindholm
 John and Mary Lindstrom
 John Litch
 Bonnie Lodermeier
 Judy and Bruce Loehle-Conger
 Carol and Jerry Loomis
 Paul Lorah
 Alonah Lorenz
 Rick Loeth
 Jeanine Kelley and Michael Love
 Robert Luken
 Dennis E Lund
 Peggy Lynch
 Susan and Christopher Lyons
 Mark N. Lystig
 Kimberly Macey
 Barbara J. Mahr
 Trevor Maiers
 Charlotte Brooker and Gene Mammenga
 Bruce Mann
 Ed and Sue Marek
 Andrew Mariska
 Michele Marrinan
 Phil & Stephanie Martineau
 William and Candace Marx
 Deborah Mastella-Sershon
 Bonnie Matter
 Phyllis J. Matthews
 Susan Mattson
 David McAlpine Family
 Michael McCarthy
 Jean McCurdy
 Hannah McGraw-Dzik
 Anne McKinsey
 William and Susan McKnight
 David and Rebecca McPherson
 Steve McVay
 Samuel Meddaugh
 Kay J. Mehl
 Jeffrey and Anne Mehnke
 Peter and Katie Meier
 Richard and Joan Meierotto
 Bill Meller
 Grant J. Merritt
 Mesabi Trail



Jeffrey Messerich
 Timothy Metcalf
 Dr. Christopher L. Meyer
 Mike and Linda Fiterman Foundation
 Theresa and Scott Miller
 Laura Miller
 Robert Miller
 Karen and David Minge
 Minnesota Rovers Outdoors Club
 Charles L. Mitchell
 Theresa Mlinar
 Norma Monroe
 Susan Moore
 Dean Moren
 William Morgan
 Patricia and Gerald Moriarty
 William Morris
 Bruce Jacobson and Ann Morrissey
 Kathleen and Mark Mortenson
 John and Marlene Mulrooney
 Helena Myers
 Greg and Cheryl Myhr
 Debra Carpenter and Stephen Nagle
 Dan Nelsen
 Bonnie Nelson
 David (Rusty) Nelson
 Diane M. Nelson
 Larry W. Nelson
 Sandra and Mark Niblick
 Katherine and Stuart Nielsen
 David Niemi
 Dick and Joan Niemiec
 Mark Nigogosyan
 Lisa Nilles
 Harry Nilsson
 Sally Noll
 Barbara Freund Norrgard
 Catherine O'Dell
 Thomas O'Keefe
 Harlan Cavert and Linda Odegard
 Jenneke Oosterhoff and Ron Okenfuss
 Kathy Bonnifield and Adam Oliansky
 Eugene and Julie Ollila
 David and Lisa Olson
 Jeffrey and Susan Olson
 Casey Olson
 James E McBride

Rebecca F. Olson
 Vic W. Olson
 Stacy and Matthew Osmond
 Douglas and Phyllis Ostergren
 Gerard J. Ottman
 Brian and Julia Palmer
 Craig Parsons
 Mike Path
 Sally and Tom Patterson
 Jay, Sue and Marisa Paulson
 John and Linda Peck
 David and JoAnne Peterson
 James McCarthy and Gloria Peterson
 James and Vivian Pietrick
 Stephen Willett and Diane Pike
 John Poate
 Barbara Wahman and Allen Porter
 Scott and Amy Priddy
 Sarah Psick
 Anne and Brian Purrington
 Maurice Quam
 David H. Quandt
 L. E. Quenemoen
 Elizabeth and Greg Quicksell
 Paul M Rasmussen
 A. David Redish
 Carole A. Reichert
 Richard Reichle
 Susan Reinhart
 Jack and Judy Rice
 Thomas J. Rice
 David H. Richards
 Charles and Susan Richardson
 David Rischall
 Steve Robinson
 Richard Rogers
 Patricia L. Rogowski
 Donna Roles
 Jean and Charles Ronnei
 Janice K. Root
 Anna Marie P. Rosen
 Katie Roth
 Brynhild Rowberg
 Curtis L. Roy
 Linda and Henry Ruetz
 Julia and Carl Rundberg
 Tom and Lynn Rusch
 Raymond and Joan Russell
 Mary M. Russell
 Michael Russell
 Jeffrey Russum
 Edwin and Jennifer Ryan
 Deb and Grant Rykken
 Nichole and Jeff Schaefer
 Louise Delagran and Dave Schaenzer
 Lana Schaffer
 James Schermerhorn
 John Schlagel
 Peter A. Schlesinger
 Lise L. Schmidt
 Elizabeth and William Schmitt

Peter M. Schmitt
 Michael Schwab
 Lawrence and Mary Schwanke
 Troy R. Schwartz
 Glen and Darlene Scott
 John D. Sedgewick
 Marcia Hillestad Seguin and D. Peter Seguin
 Estelle Q. Sell
 Carolyn and Raymond Serrano
 Scott Seys
 Charles and Judith Shepard
 Charles and Judith Sherman
 Scott and Louise Sicard
 Jill and Steven Sicheneder
 Suzann Willhite and Kristin Siegesmund
 Miriam G. Simmons
 Todd Meltzer and Sue Skonnord
 Eunice A. Slager
 Grant Martin and Wendi Slattengren
 Charles and Susanne Smith
 Nell and Chris Smith
 Conrad and Ann Smith
 Carla J. Smith
 Jason T. Smith
 Katy M. Smith
 Linda E. Smith
 John and Marsha Soucheray
 Susan J. Specker
 William Spring
 Franklin E. Star
 Alan Steiff
 Barbara Stelmasik
 Brian and Kate Stephany
 Paul E. Stole
 Roger Strand
 Gary A Strandemo
 Roger J. Strharsky
 Nancy and John Strom
 Donald and Patricia Sullivan
 Superior Hiking Trail Association
 Clark Thurn and Claudia Swendseid
 Theodore and Cynthia Szczech
 Bob Tammen
 Phillip C. Taylor
 Lawrence Tempel
 David and Rebecca Ternes
 Karen Thimmesch
 James W. Thommes
 Kent and Kathy Thompson
 Thomson Reuters
 Eric Bergerson and Laura Thorpe
 Thrivent Financial for Lutherans
 Foundation
 Joseph Thurn
 Elaine and James Tohal
 Mark Tomasek
 Thomas Triplett
 Twin Cities Bicycling Club
 Faye Ulrich
 Thomas and Anne Utschig

Mike R Van Essen
 Ronald G. Vantine
 John Velin
 Mary Volk
 Jim Walch
 Charles Wald
 Maxine H. Wallin
 Bill and Judy Walter
 Thomas M. Wappes
 Nina Warmboe
 Erin and Jeff Warshaw
 Maureen J. Watson
 Stuart Webb
 Robert and Mary Weber
 Leon and Melinda Webster
 Kellie Webster
 Don and Renee Weirick
 Dennis and Maureen Welsch
 Mike and Pam Wiehe
 Joseph Wilhelmy
 Frank and Frances Wilkinson
 Shawn J. Willy
 Dan Barnes and Elaine Wilson
 Terence Wingert
 Donald and Bente Winston
 Thomas Winston
 Susan T. Wolf
 Milo Oien-Rochat and Katharine Wood
 Bryan L. Wyberg
 Kathryn Steinberger and Jim Young
 Richard D. Young
 Gloria Zaiger
 William R. Zajicek
 John Zarins
 Patrick Zeuli
 Phil and Anne Zink
 Sarah Ziring
 Erica W. Zweifel

Tributes & Memorials

In honor of Burt Grimes

Stacey Grimes

In honor of Chuck and Cheryl Cole

Michael Cole

In honor of Dan Mettner

Bob Nesheim and Marlys Johnson

In honor of Eleanor Winston

Thomas Winston

In honor of Mr. Robert Gefvert

Bruce Gefvert

In honor of Thomas Wahlberg

Sarah Adamis

In memory of Barbara Schaeppi Brekken

Robert A. Brekken
Julie and Michael O'Brien

In memory of Betts and Jim Wyman

Donald and Bente Winston

In memory of Bill Morrissey

Patricia Arndt
Bruce Jacobson and Ann Morrissey

In memory of Donald G. Brauer

Grant J. Merritt
Borghild G. Brauer Trust

In memory of Harry Nilsson

Thomas P. Goodrich
Kaara Nilsson and others

In memory of John Faiks

Joy and Kent Robbins

In memory of Keith Fester

Karen and David Minge

In memory of Mary Virginia Thompson

Victoria M. Elmer

In memory of Robert Oas

Kurt E. Zupke

In memory of Shirley Jean Nelson

Kurt E. Zupke

In memory of Steve Hallin

Kay M. Werner

In memory of William H. Brose

Kurt E. Zupke

In honor of Lisa and Paul Heine and family

Richard Heine

Volunteers

Recognizing those who gave their time and talents in 2014

Dorothy H. Anderson Ph.D.
Kathy Bonnifield
Richard "Dick" Brainerd
Andrew Brantingham
Mike Burnett
Bill Carlson
Gary Connett
Kathy Connelly

Jennifer Conrad
David Dixen
Alexis Dunlop
Bob Erickson
Tim Eschweiler
Keith Fester
Anne Flueckiger
Jean Greenwood
Stacey J. Grimes
Julie Gugin
Thomas Gump
Rudi Hargesheimer
Verónica Jaralambides
Bruce E. Johnson
Paul Karazija
Mark Larson
John Leinen
Bill McKnight
Grant Merritt
Daniel L. Mettner
David Minge
John Morgan
Josephine Ann Musumeci
Steve Nagel
Emily Nesvold
John Oldendorf
Vic W. Olson
Stacy Osmond
Tom E. Pavey
Mike Prichard
Peggy Prowe
Dan Schuchman
Dave Simpkins
Linda Simpkins
Joelene Steffens
Tom Stoa
Michael V. Tegeder

In Kind Donors

Those who donated goods or services

Above the Falls Sports
Cove Point Lodge
The Dinner Detective Minneapolis
Sen. Dave Durenberger & Susan Foote
Eastside Food Co-op
Erik's Bike Shop
Brett Feldman
Kelli Fifield
Larry Fitzgerald
Guthrie Theater
Rudi Hargesheimer
Derek Johnson
The Loppet Foundation
Midwest Mountaineering, Inc.
Minnesota Center for Book Arts
Minnesota Historical Society
Minnesota Timberwolves
Minnesota Trails Magazine

Rebecca and Shawn Otto
Peace Coffee
Linda Picone
Robyn Beth Priestley
Dave Simpkins
Tea Leaf Gallery
Michael V. Tegeder
There And Back Books
Steven G. Thorne
Timber Trail Lodge
Toro Company
Vertical Endeavors
The Willard Munger Inn

Community Partners

Recognizing organizational members whose mission, goals or objectives intersect with the Parks & Trails Council's mission to acquire, protect and enhance critical land for the public's use and benefit on a local, regional or statewide level.

Border Route Trail Association, Inc.
Crow River Trail Guards
Friends of Anderson Park
Friends of Bertram Chain of Lakes Regional Park
Friends of Casey Jones Trail
Friends of Forestville
Friends of Glacial Lakes State Park
Friends of Jackson County Trails
Friends of Lake Bemidji State Park
Friends of Lake Maria State Park
Friends of Lashbrook Park
Friends of Maplewood State Park
Friends of Mill Towns State Trail
Friends of Murray County Parks
Friends of Scandia Parks and Trails
Friends of Cannon Valley Trail
Friends of the Lindbergh Heritage
Friends of Wild River State Park
Gateway-Brown's Creek Trail Association
Gitchi Gami Trail Association
Lake Louise State Park Association
Lake Wobegon Trails
Minnesota Horse Council
Minnesota Rovers Outdoors Club
Minnesota Trail Riders Assn.
MN Nordic Ski Association
North Star Ski Touring Club
Northstar Trail Travelers
Renville County HRA/EDA
Southeast Minnesota Association of Regional Trails - SMART
Sibley State Park Improvement Association
Superior Hiking Trail Association
Wheels On Trails

Pro-Bono Law Firms & Attorneys

Recognizing law firms whose lawyers offered pro-bono legal advice in 2014

Oppenheimer Wolff & Donnelly LLP

Kenneth Rowe

Dorsey & Whitney LLP

James R. Schultz

Maslon, LLP

Andrew Jacobson
Charles Bans

Fredrikson & Byron P.A.

Jeffrey Benson
Lisa Lindenfelser
Timothy Eschweiler

Kennedy & Graven, Chartered

Michael Norton

Corporate Sponsors



We make significant efforts to ensure this lists as accurate as possible and to publicly acknowledge all our donors in accordance to their wishes. If we have omitted or incorrectly reported your gift, please accept our apology and contact our office at (651) 726-2457.

2014 BOARD OF DIRECTORS

Executive Committee

Mike Tegeder, *President*
Julie Gugin, *Vice President*
Robert O. Erickson, *Treasurer*
Timothy Eschweiler, *Secretary*
Kathy Bonnifield, *Director at large*
Andrew Brantingham, *Director at large*
Mark Larson, *Director at large*
Tom Pavey, *Director at large*

Directors

Dorothy Anderson
Richard "Dick" Brainerd
Kathy Connelly
Gary Connett
Anne Flueckiger
Verónica Jaralambides
Bruce Johnson
Paul Karazija
Emily Nesvold
John Oldendorf
Tom Stoa

Honorary Directors

Rollis Bishop
Sen. David Durenberger
Thomas T. Dwight
Martin Kellogg
David Minge
Mike Prichard
Peter Seed

2014 STAFF & CONSULTANTS

Joe Bagnoli
Government Relations Consultant
Vicki Dunlop
Database Administrator
Brett Feldman
Executive Director
Lisa Filter
External Relations Director
Beth Hynes
Database Administrator
Jess Mann
Administrative Assistant
Andrew Oftedal
Research & Policy Consultant
Sarah Psick
Government Relations Consultant
Steve Young
Land Acquisition Consultant



Parks & Trails Council of MN
275 E. 4th St., Suite #250
St. Paul, MN 55101-1626
(651) 726-2457 or (800) 944-0707
www.parksandtrails.org

Non-Profit Org U.S. Postage PAID Twin Cities, MN Permit #4936

Published by Parks & Trails Council of Minnesota
May 2015
photography generously donated by the following artists
Gary Alan Nelson - www.garyalannelson.com
Rudi Hargesheimer - www.northshorephotoart.com
Nadine Blacklock